



ELECTRONIC SHEAR

PONY EVO

Maintenance window for quick blade change

Precision engineered blade group

Co-moulded rubber hand grip

Ultra slim hand piece

LED Power indicator

Ergonomic trigger

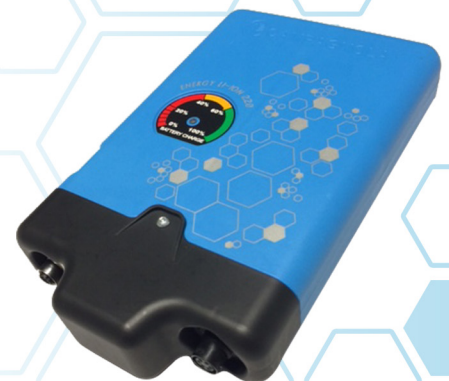


The new work horse for spur & shoot pruning.

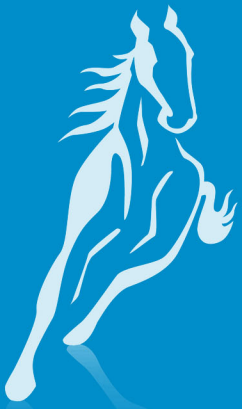


A world leader in the production of pneumatic & electronic systems for easy pruning & harvesting. Campagnola products receive the highest attention to detail in manufacturing & design, making them some of the finest products available for the various horticulture industries.

New Lithium ion battery



Imported and distributed by Eclipse Enterprises Australia PTY LTD
www.eclipseenterprises.com.au | 08 8351 8611



ELECTRONIC SHEAR

PONY EVO

The all new Pony EVO was devised by the Campagnola research and development department as the perfect portable electronic pruner for fast pruning. The specially designed cutting head ensures very effective pruning of spurs in the vineyard & shoots in the orchard.



Cutting modes

- ◆ **AUTO100** The mobile cutting blade opens to its maximum cutting capacity.
- ◆ **AUTO70** Reduces the cutting capacity to 70% of the maximum blade opening. Double tap the trigger to return to 100% for 1 cut.
- ◆ **AUTO40** Reduces the cutting capacity to 40% of the maximum blade opening. Double tap the trigger to return to 100% for 1 cut.
- ◆ **MANUAL** Synchronises the cutting blade movement with pressure exerted on the operating lever. This mode is recommended for novice operators or very precise cutting applications.

Smooth rubber grips, an ergonomic operating trigger, balanced weight distribution and an angled cutting head make the Pony EVO feel as if it is an extension of the arm; twisting, turning and moving the wrist is less tiring and more comfortable as a result. As the blade (manufactured from Tool Steel) is worn and re-sharpened, closure can be adjusted electronically so the blade continues to by-pass the anvil - prolonging working life of the blade.

25mm



mm

770g



g

1.7kg



kg

51 volts



v

10 hours



All new Ultra-light Lithium ion battery

The Pony EVO is powered by the latest in battery technology from Campagnola. The power pack features an energy indicator LED to inform the operator of the current charge status. The new form fitting pack and super slim battery design allows for better operator movement and comfort. Although the battery itself only weighs 1.7kgs, it has a 10 plus hour working autonomy. All 4 cutting modes can be selected and blade tension, unit temperature, daily and total cut quantities are readable via the belt mounted digital display. After being inactive for 20 minutes, the battery will switch off to prevent accidental flattening or tool discharge.